

**SPECIFICATION DATA SHEET**

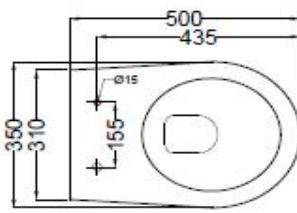
**PRODUCT DETAILS**

<b>Manufacturer :</b>	ESSCO	<b>Type:</b>	Wall Hung WC
<b>Colour:</b>	White	<b>Flush valves</b>	Regular, Dual & I Flush advantages
<b>Outlet</b>	Horizontal	<b>Material:</b>	Ceramic - Vitreous China
<b>Technical Details:</b>	Internal diameter of inlet hole dia. $\varnothing 55 \pm 3$ mm External diameter of outlet hole dia. $\varnothing 100 \pm 5$ mm		

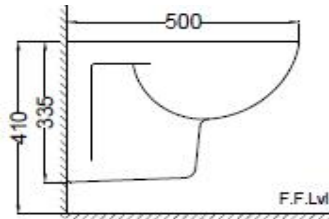
**PRODUCT IMAGE**



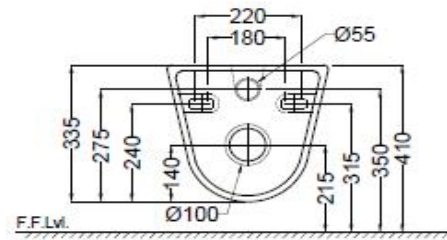
**TECHNICAL DRAWING**



TOP VIEW



SIDE VIEW



BACK VIEW

<b>Product Dimension</b>	350x500x335 mm	<b>FEATURES</b>
<b>Product Weight</b>	13.1 kg	Complete Trap Glaze, PP Soft Close Seat cover, Packed with Accessories, Trap glaze, Dual Flushing - 3/6 LPF, Anti germ glaze.
<b>ACCESSORIES INCLUDED</b>		
PP Soft Close Seat cover		ECS-WHT-101S
Inlet & Outlet gasket		ZPS-WHT-GK01
<b>ACCESSORIES EXCLUDED</b>		
Rag bolt		ZPS-SNS-RB01 & ZPS-MST-RB07
Concealed cistern model no		JCS-WHT-2400S,2400FS,2400WS

**CERTIFICATION**

**All technical dimensions are in accordance to Bureau of Indian Standards**

DISCLAIMER: Our every effort has been made to ensure factual accuracy, the information presented subject to changes due to requirements in different sites, markets and/ or countries. All dimensions are in mm (Tolerance  $\pm 5$  MM). Jaquar reserves the right to make the necessary amendments at any time without prior notice.